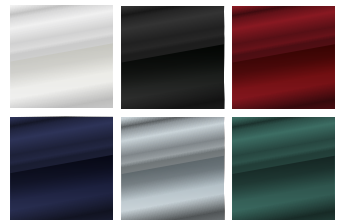




LION GOLF

Everything you would expect from the most advanced Golf Car on the market. Unrivalled comfort with power and reliability.

Standard features include advanced AC Controller and Motor, deluxe LED lighting system, automatic park brake, along with onboard charger, seatbelts and four wheel disc brakes.



AVAILABLE IN A RANGE OF METALLIC COLOURS

liongolfcars.com.au



LION GOLF



WARRANTY:

- 5 Year chassis warranty
- 2 Year electrical/mechanical warranty
- 5 Year replacement battery warranty
- 2 Year replacement charger warranty

SPECIFICATIONS

STANDARD INCLUSIONS:

- Metallic bodywork
- Deluxe LED lighting system
- Seatbelts
- Speedometer & state of charge meter
- Mag wheels
- Onboard charger
- Dual USB port
- Mirrors

PERFORMANCE

- Seating – 2 person
- Max speed – Adjustable up to 25KPH
- Turning circle – 3.1m
- Climbing availability – 25%
- Brake distance - <5m

KEY COMPONENTS

- Advanced 105ah Lithium pack OR Advanced 150ah HD Lithium Pack
- 350A LEV AC Controller
- Motor – 4.0KW AC motor
- Matched RCM complied charger

DIMENSIONS

- Length – 2410mm
- Width – 1210mm
- Height- 1830mm
- Weight – 415kg w/105ah battery
- Ground clearance – 210mm

BRAKING/SUSPENSION/STEERING

- Hydraulic 4 wheel disc brakes
- 10" alloy mag wheels
- 205/65-10 4 ply tyres
- Electro magnetic park brake
- Fully independent suspension
- Rack & pinion steering

OPTIONAL EXTRAS:

- Rotating beacon
- Tailor made all weather curtains

liongolfcars.com.au